

# HDSO14P



## Four-Post Lifts

SKU# 5175152

14,000-lb. Capacity, Four-Post Lift, Open-Front

Questions? Contact BendPak's Sales Team

sales@bendpak.com | 1-800-253-2363

Monday - Friday, 6AM to 4:30PM PST

## Open-Front Capability in a Powerful Car Lift

The HDSO14P is a legendary 14,000-lb. capacity [open-front four-post car lift](#) that allows easy entry and exit beneath a vehicle. It is available with optional drive-thru ramps, drip trays and rolling jacks. The HDSO14P is an open-front four-post lift that features clear entry upfront, providing easy vehicle access. A generous 14,000-lb. lifting capacity and extended runways allow you to service a wide variety of vehicles, ranging from small cars to full-size trucks.

## Features

- CE Approved and Certified. Meets or exceeds the standards prescribed by European Standard EN 1493
- Huge cable sheaves reduce wear and tear
- Extremely convenient open-front design for easy access
- Extended runway length for servicing
- Longer approach ramps for low ground clearance vehicles
- Electric / hydraulic power system
- Runways include rail-kit for optional accessories
- Runways adjust for different tread widths
- Automatic leveling system with multiple auto-leveling locking positions
- Single hydraulic cylinder mounted underneath runway
- Fully enclosed lifting cables, safety locks, and sheaves
- Internal anti-sway slider blocks in each column
- Pneumatic push-button safety release
- Features heavy-duty 1/2" aircraft cable
- Safety locks enclosed in columns minimize pinch points
- Oversized sheave diameter reduces cable fatigue
- Runways feature non-skid surface
- Rugged, self-lubricating cable sheaves
- Features 1-3/8" sheave axles
- Multi-position safety locks in each column
- Independent backup slack-cable safety latches
- Includes fully adjustable lock stops for precise leveling
- Integrated rolling bridge airline kit option available
- Roll-back kit options available
- Optional drive-thru ramps available
- Optional drip trays available
- Optional 7,000-lb. capacity rolling jacks available



### Open-front design

We engineered the HDSO14P without a front cross bar, so operators can easily enter and exit from beneath the vehicle. Now the process of front-end adjustment becomes quick and trouble-free. This model is a must-have for busy alignment bays.

### Patented, adjustable front outrigger tubes

For precise front-lift leveling, nothing beats our patented adjustable front outrigger tubes. The infinitely adjustable pitch compensates for excessive loads and unlevel floors.

### Dependable design

Four high-quality, stainless steel lifting cables and a single hydraulic cylinder mounted underneath the runway make this lift the most durable, maintenance-free lifting system on the market.

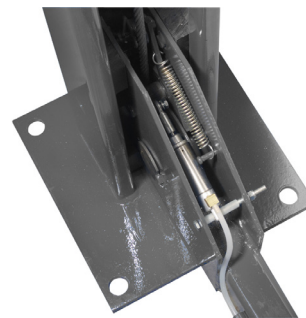
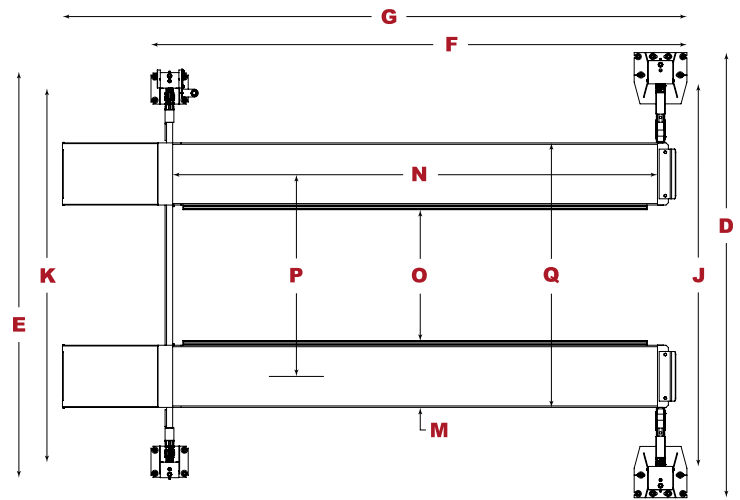
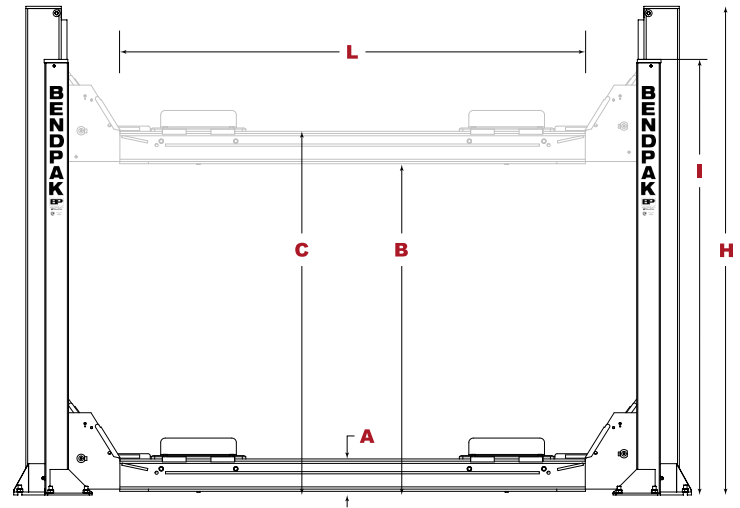
### Multi-level locking positions

The HDSO14P is equipped with multiple adjustable height locking positions for variable-height parking. A convenient push-button pneumatic safety lock control releases all four independent safety locks simultaneously.

# Specifications



<b>Model</b>	<b>HDSO14P</b>
<b>Style</b>	Open-Front Four-Post Lift
<b>SKU#</b>	5175152
<b>Lifting Capacity</b>	14,000 lbs. (6,350 kg)
<b>A - Min. Runway Height</b>	7-5/8" (192 mm)
<b>B - Max. Rise</b>	70" (1,778 mm)
<b>C - Max. Lifting Height</b>	77-5/8" (1,970 mm)
<b>D - Overall Width (FRONT)</b>	143" (3,632 mm)
<b>E - Overall Width (REAR)</b>	130" (3,301 mm)
<b>F - Outside Length</b>	215.5" (5,473 mm)
<b>G - Overall Length</b>	244" (6,198 mm)
<b>H - Height of Columns (FRONT)</b>	105" (2,664 mm)
<b>I - Height of Columns (REAR)</b>	103" (2,613 mm)
<b>J - Width Between Columns (FRONT)</b>	123" (3,124 mm)
<b>K - Width Between Columns (REAR)</b>	120" (3,046 mm)
<b>L - Drive-Thru Clearance</b>	97" (2,464 mm)
<b>M - Runway Width</b>	20" (508 mm)
<b>N - Length of Runways</b>	199" (5,054 mm)
<b>O - Width Between Runways</b>	45" (1,143 mm)
<b>P - Runway Centerline</b>	65" (1,651 mm)
<b>Q - Outside Edge of Runways</b>	85" (2,159 mm)
<b>Min Wheelbase @ Capacity</b>	140" (3,556 mm)
<b>Min Wheelbase @ 75% Capacity</b>	120" (3,048 mm)
<b>Min Wheelbase @ 50% Capacity</b>	100" (2,540 mm)
<b>Min Wheelbase @ 25% Capacity</b>	80" (2,032 mm)
<b>Time to Full Rise</b>	60 seconds
<b>Locking Positions</b>	13
<b>Lock Spacing</b>	every 4" (102 mm)
<b>Motor</b>	220 VAC / 60 Hz / 1 Ph



An air supply (minimum 30 psi / 3 CFM) is required for the safety-lock mechanisms to disengage. It is solely the responsibility of the end-user to provide, install and maintain the air supply.

Not all BendPak lift models meet the standards as prescribed by ANSI/ALI ALCTV-2011 or ANSI/UL 201. Consult [www.autolift.org](http://www.autolift.org) for a complete list or contact BendPak via [contact@bendpak.com](mailto:contact@bendpak.com).